

# Parking Sensor Camera Monitor

## Car Parking Sensor Camera Monitor CATALOG - 2022



### Shenzhen Sunway Industry Co., LTD

3rd Floor, Building G (Linkou Building), Taiwan Industrial Village,  
Songbai Road, Shiyan, Baoan, Shenzhen, China 518108

Web: [www.sunwayi.com](http://www.sunwayi.com)

Email: [sun@sunwayi.com](mailto:sun@sunwayi.com)

Tel: +86 755 2905 8679

Fax: +86 755 2763 3890



### Shenzhen Sunway Industry Co., LTD



ISO 9001:2015

[www.sunwayi.com](http://www.sunwayi.com)

# Company Profile



Established in 2001, Shenzhen Sunway Industry Co., Ltd. is a professional manufacturer in car electronics industry. Car Parking Sensor System, Camera & Monitor are very distinguished products in the markets. With Industrial Zone in Hunan Province, headquarter in Shenzhen, and over 200 employees, Sunway Industry output is 800,000 pieces with current export of 90% of all products, which are exported to over 80 countries and regions, especially Germany and EU, USA, Australia, Japan, Brazil, Mexico, ASEAN, etc. Most clients are famous all over the world, such as LIDL, ALDI, COSTCO, Wal-Mart, Amazon, SHO-ME, Tech One. Sunway Industry has a skilled R&D team and ODM/OEM customizing advantages, is always able to provides car electronics with high quality, short delivery, competitive price and professional service. As a BSCI factory and ISO9001 certified company, with CE, FCC, E-mark approval, we continuously cooperate with our overseas partners to strengthen the international market share.



## Product Category

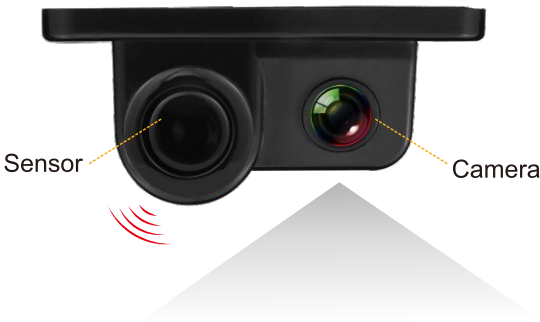
New Arrival & Hot-sale Products	2IN1 SP-88 3IN1-50 BCA50	2IN1AHD C-88 U41 RCA50	3IN1 SW868 U41-M	3IN1AHD W868
Parking Sensor AID System	EULPVPS-B SW-618F-8 SW-888-4 SW-858-4 SW-858K-4RF SW-858K-02	EULPVPS-B/F SW-818N SW-288-4 SW-878-4 SW-858K-01		
Car Camera	EU/CP-P SW-US/NCP SW-EU/CP MLP-ME SW-EU/CPM MLP-ME2 SW-US/CP	SW-NLP LLP-PL SW-BF/LP MLP-ME1 MLP-ME3 SW-LLP		
Car Monitor	SW-43M SW-43S SW-43D/BS SW-43D/F SW-50M	SW-70M SW-70M/PT SW-70MD SW-70D SW-4S70D	SW-50D	

## Qualification & Honor



2-in-1 Integrated Video  
Parking Sensor System

2-IN-1



- Convenient and simple installation to save cost.
- Control Unit, Camera, Ultrasonic Sensor are Integrated.
- Sensors: HD CMOS, Wide Viewing Angle
- Suitable for all kinds of economic vehicles.
- Rated working voltage: 10~16V DC. Operating current: 20~200mA.
- Operating temperature:-35~75°C, Detection Distance: 30~220cm.

2-IN-1 AHD



- Image Sensor: AHD 1080P
- Wide Viewing Angle
- Detection Distance: 30~220cm.
- Control Unit, Camera, Ultrasonic Sensor are Integrated.
- Convenient and simple installation to save cost.
- Rated working voltage: 10~16V DC. Operating current: 20~200mA.
- Operating temperature:-35~75°C.



3-in-1 Integrated Video  
Parking Sensor System

3-IN-1



- Convenient and simple installation to save cost.
- Control Unit, Camera, Ultrasonic Sensors are Integrated.
- Sensors: HD CMOS, Wide Viewing Angle
- Suitable for all kinds of economic vehicles.
- Rated working voltage: 10~16V DC. Operating current: 20~200mA.
- Operating temperature:-35~75°C, Detection Distance: 30~200cm.

3-IN-1 AHD



- Image Sensor: AHD 1080P
- Wide Viewing Angle
- Detection Distance: 30~220cm.
- Control Unit, Camera, Ultrasonic Sensors are Integrated.
- Convenient and simple installation to save cost.
- Rated working voltage: 10~16V DC. Operating current: 20~200mA.
- Operating temperature:-35~75°C.







Solar Wireless Parking Sensor

SP-88



- LCD Display power-on by Solar Power Energy
- Display Showing obstacle direction & distance when reversing
- Wireless connection between display and main unit. Frequency 433 MHz
- Sound Alarm Type: BiBi warning sound. Work automatically when reversing.
- Detection Distance: 30-250cm.
- Working voltage: 10-16V DC. Operating current: 20-200mA.
- USB Charging for display as Auxiliary way besides solar charging



LED Parking Sensor System

SW868



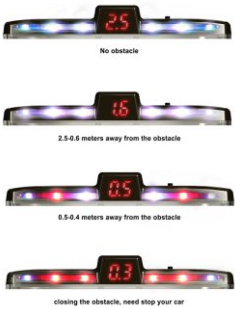
- Colorful LED Displayer shows obstacle distance.
- Attractive LED with switch.
- Work automatically when reversing.
- Detection Distance: 30~250cm.
- Voltage: 12V DC(usually).
- Work temperature: -30 ~ 70°C.

New style Led Display Models for more choice

SW838



It detects and obstacle, and alert with sound and visual display. Ensure safety for car reversing.



Wireless Ignition-power Parking Sensor System

C-88



Car ignition Power on Display. No cable, No splicing!



ROTATING & USB  
CHARGING MONITOR

- LCD Display power-on by car ignition power
- Display Showing obstacle direction & distance when reversing
- Wireless connection between display and main unit. Frequency 433 MHz
- Sound Alarm Type: BiBi warning sound. Work automatically when reversing.
- Detection Distance: 30-250cm.
- Working voltage: 10-16V DC. Operating current: 20-200mA.
- USB Charging Port for Mobile Phone
- Displayer can Move for optimal view angle

Wireless Video Parking Sensor with HD Monitor

3IN1-50



Sound alarm for safer reversing, besides image display!

- Activate reversing mode automatically
- No Signal Wiring Required Easy to install
- Sound warning & obstacle distance display, besides image showing. Durable safety while vehicle reversing.
- 720P High Definition Resolution.
- 5.0" HD high light IPS screen.
- Wide View Angle, no blind corner.
- IP67 Waterproof Rated.
- Interference-free 2.4G digital wireless Signal.
- No built-in battery, Car Power Connection.

- Detection Distance: 1-7.5FT(0.3-2.5M)
- Control Unit, Camera, Ultrasonic Sensors are Integrated.
- Convenient and simple installation to save cost.
- Rated working voltage: 10~16V DC
- Operating current: 20~200mA.
- Operating temperature:-35~75°C.





## Intergrated Parking Camera

U41



- Highly Integrated (3 Sensor + 1 Camera)
- No External Box / Less Cable Connection
- Image Switch via Software instead of Wire
- Parking Aid via Voice Warning & Color Display
- Work as Dash Cam Rear Camera or Video Parking
- Fill-in Lights Give good Night Clarity for Reversing
- Zinc alloy shell with good texture and durability
- 1/3 CMOS with High Clarity & good Night Vision



**Working Voltage: DC12V (9-16V range)**

Video Parking Sensor    Voice Warning for Parking    HD & NightVision Image  
Rear Camera of Dash Cam    Sound Warning for Parking    HD & NightVision Image

U41-M



**with moving reversing track**



## Solar Wireless Visual Parking Sensor System



**BCA50**

- Sound warning & obstacle distance display, besides image showing. Durable safety while vehicle reversing.
- 720P High Definition Resolution.
- 5.0" HD high light IPS screen.
- 170° Large View Angle, no blind corner.
- IP67 Waterproof Rated.



- DIY Installation, 5 minutes for ready.
- Solar Panels for efficient charging.
- Interference-free 2.4G digital wireless Signal.
- All-in-One US License Plate, more original!
- 2100 mAh battery for long time work.



**RCA50**

**Sound warning**  
Sound alarm for safer reversing, besides image display!

Detection Distance: 1-7.5FT(0.3-2.5M)

**HD 720P**



## EULPVPS-B

### Video Parking Sensor for EU License Plate

1/4 inch NTSC/PAL CMOS Image Sensor with 640x480 Pixel Array.  
Working Voltage: DC12V (9-16V range) .  
Ultrasonic Sensor detecting distance: 0.3-2.0 Meters.  
Sensors have waterproof & shockproof, anti-false function.  
Obstacle Image ,direction, and distance can be shown colorfully on TFT screen.  
BiBi Voice Warning with Distance Data displaying.  
Image Sensor: CMOS, View Angle: 100°.  
Work temperature: -30 to 70°C



## SW-888-4

### LED Parking Sensor

- Colorful LED Displayer shows obstacle distance.
- Attractive LED with switch.
- Work automatically when reversing.
- Detection Distance: 30~220cm.
- Voltage: 12V DC(usually).
- Work temperature: -30 ~ 70°C.



## EULPVPS-B/F

### Video Parking Sensor for EU License Plate

- Front or Backup Plate System Turns ON/OFF automatically with the gear status(Hands-free auto ON/OFF).
  - Working Voltage: DC12V (9-16V range) .
  - Ultrasonic Sensor detecting distance: 0.3-2.0 Meters.
  - Sensors have waterproof & shockproof, anti-false function.
  - Obstacle Image ,direction, and distance can be shown colorfully on TFT screen.
  - BiBi Voice Warning with Distance Data displaying.
  - Image Sensor: CMOS, View Angle: 100°.
  - Work temperature: -30 to 70°C
- 1/4 inch NTSC/PAL CMOS Image Sensor with 640x480 Pixel Array.



## SW-288-4

### Wireless LED Parking Sensor

- Wireless connection between LED display and main unit.
- With LED display indicating obstacle direction & distance.
- Work automatically when reversing.
- Alarm Type: BiBi warning sound.
- Working voltage: 10~16V DC.    Operating current: 20~200mA.
- Operating temperature:-20~70°C, Detection Distance: 30~200cm.



## SW-818N

### LED Parking Sensor

- Colorful LED Displayer shows obstacle distance.
- Work automatically while reversing.
- Voltage: 12V DC(usually).
- Work temperature: -30 to 70°C
- Detection Distance: 30~200cm.



## SW-858-4

### LED Parking Sensor

- Colorful LED Displayer shows obstacle distance.
- Attractive LED with switch.
- Work automatically when reversing.
- Detection Distance: 30~220cm.
- Voltage: 12V DC(usually).
- Work temperature: -30 ~ 70°C.



## SW-618F-8

### Front & Back Parking Sensor

- 4 channels for front sensors, 4 channels for back sensors
- 8 Lcd bars show 8 sensors working status separately
- Visual and audible warning to prevent bumping
- Front sensors will work continually for 15 seconds once pressing car brake.
- Detection Distance: 30~250cm(Back) 30~100cm(Front)
- Ultrasonic Frequency: 40±1KHz
- Work automatically, Operating temperature:-30~70°C
- Sensors Number: 4+2, 4+4.



## SW-878-4

### LED Parking Sensor

- Colorful LED Displayer shows obstacle distance.
- Work automatically while reversing.
- Voltage: 12V DC(usually).
- Work temperature: -30 to 70°C
- Detection Distance: 30~200cm.





SW-858K-4RF

Pick-up Parking Sensor

- RUBBER sensor, installed on steel bumper.
- Sensors are waterproof & anti-shock, anti-false.
- Suitable for all kinds of steel bumper vehicle.
- Rated working voltage: 10~16V DC. Operating current: 20~200mA.
- Operating temperature:-35~70°C, Detection Distance: 30~220cm.
- Ultrasonic Frequency: 40±1KHz.



SW-858K-01

OEM Parking Sensor

- Suitable for all kinds of vehicles.
- Sensors are waterproof & anti-shock, anti-false.
- OEM sensor, installed inside bumper, flat to the bumper, looks like original.
- Rated working voltage: 10~16V DC. Operating current: 20~200mA.
- Operating temperature:-35~70°C, Detection Distance: 30~200cm.
- Ultrasonic Frequency: 40±1KHz.



SW-858K-02

OEM Parking Sensor

- Suitable for all kinds of vehicles.
- Sensors are waterproof & anti-shock, anti-false.
- OEM sensor, installed inside bumper, flat to the bumper, looks like original.
- Rated working voltage: 10~16V DC. Operating current: 20~200mA.
- Operating temperature:-35~70°C, Detection Distance: 30~200cm.
- Ultrasonic Frequency: 40±1KHz.

Components & Parts of parking Sensor

CONTROL BOX FOR CHOICE



LED DISPLAY FOR OPTION



ULTRASONIC SENSOR

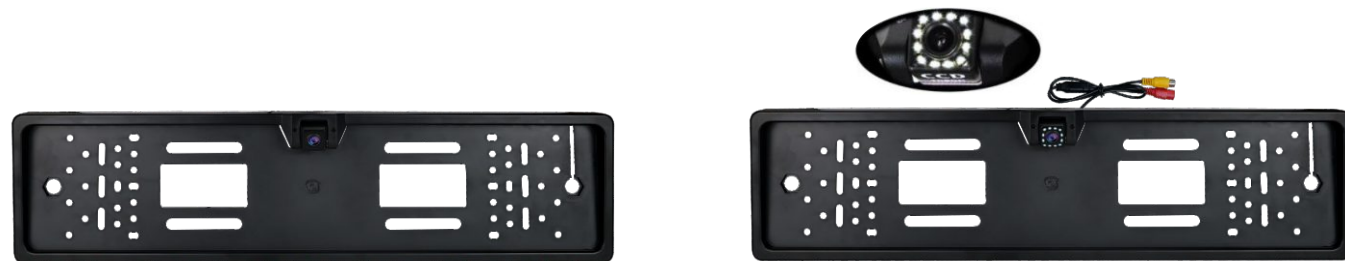




# Car Camera



**EU/CP-P**  
EU Licence Plate Camera



**SW-EU/CP**  
EU Licence Plate Camera

**SW-EU/CPM**  
EU Licence Plate Camera 12L

# Car Camera



**SW-US/CP**  
US Licence Plate Camera



**SW-US/NCP**  
US Licence Plate Camera



**LLP-PL**  
Long licence Plate Camera



**MLP-ME**  
Long licence Plate Camera



**MLP-ME1**  
Long licence Plate Camera



**MLP-ME2**  
Long licence Plate Camera



**MLP-ME3**  
Long licence Plate Camera



**SW-NLP**  
Licence Plate Camera



**SW-LLP**  
Long Licence Plate Camera



**SW-BF/LP**  
Butterfly Licence Plate Camera





SW-SQG/8LED  
with 8 LED lights



SW-SQG/IR  
IR Square Hanger Camera



SW-SQ/IR  
IR Square Camera



SW-185/IL  
D18.5mm Butterfly



SW-225/360  
360 degrees 22.5mm Camera



SW-HD/UV  
Honda Universal Camera



SW-BF/IR  
IR Hanger Camera



SW-SLP  
Short Licence Plate Camera



SW-165H  
D16.5mm Hole Camera



SW-165GH  
2 in 1 Multifunction Camera



SW-185GH  
2 in 1 Multifunction Camera



SW-185G  
D18.5mm Hanger Camera



Mini-bus Camera  
with night vision



SW-BS1  
Bus Camera 1



SW-BS2  
Bus Camera 2



SW-BS3  
Bus Camera 3



SW-165G  
D16.5mm Hanger Camera



SW-185H  
D18.5mm Hole Camera



SW-260H  
D26mm Hole Camera



SW-SQG  
Square Hanger Camera



SW-230H  
D23mm Hole Camera



SW-260G  
D26mm Hanger Camera



D18.5mm Hole IR Camera



Conch Camera



SW-220H  
D22mm Hole Camera



SW-260H/K  
D26mm Hole Camera



SW-FMP1  
Fish Mouth Pole Camera



SW-KRP1  
Korea Pole Camera



SW-KRS2  
Korea Screw Camera



SW-3AN  
3 Angle Camera



SW-FMP2  
Fish Mouth Pole Camera



SW-SC  
Turtle Camera



18.5mm 360° Camera



2.4G Wireless Sender & Receiver



2.4G Wireless Camera & Monitor

Model No.

S225-F



S225-3AN



S225-360



S225-JPC



S225-EU/CP



Technical Specifications:

Image Sensor: 1/3 CMOS (SONY225) 1.3 MP  
Processor: FULHAN FH8536H  
Video System: NTSC & PAL (optional)  
Image Resolution: 1000TVL  
View Angle: 180° L / 115° V

Min illumination: Lu0.01 Lux @ F1.2  
Effective Pixel: 1280 (H) \* 960 (V)  
Frame rate: 25 fps / 30 fps  
Video Signal Transmission: AHD  
Work Voltage: DC 12V (9-15V)

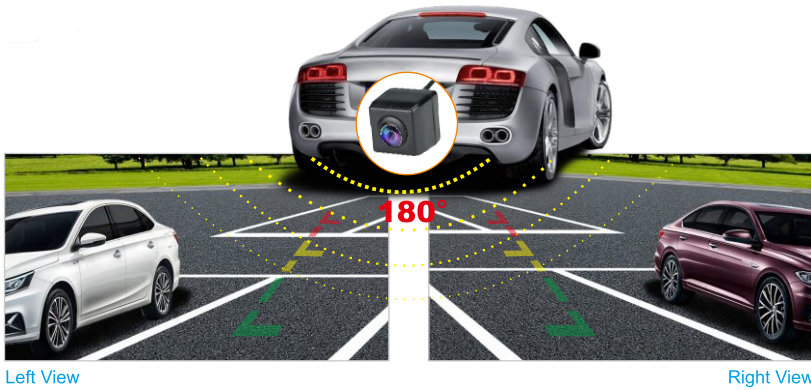
Work Current: 53 ± 5mA  
Image Character: Mirror  
Waterproof: IP67  
Operating Temp: -20 ~ 70°C  
Operating Humidity: 10% ~ 90%  
(6G / 16mm PCB)



No Blind Spots for Reversing  
All Round View

180°

720P HD Resolution  
180° View Angle  
Good Night Vision  
Super Night Vision  
Special Lower Voltage IC  
No Blind Spots for Reversing



MIRROR 4.3"

- 4.3" TFL-LCD screen.
- 2 Ways RCA input(V1/V2)
- Can be used to monitor while driving.
- The colorful mirror can connect any camera.



SW-43M  
Universal via clip-on



SW-43S  
Special bracket for special car

DESK-STYLE 4.3"

- 4.3" TFL-LCD screen.
- 2 Ways RCA input(V1/V2)



SW-43D/BS



SW-43D/F

SW-43D/BS  
Thin shell for boutique  
SW-43D/F  
Can fold for convenience

5.0" Monitor

- 5.0" TFL-LCD screen.
- 2 Ways RCA input(V1/V2)



SW-50D  
5.0 inch screen



SW-50M  
5.0 inch screen

MIRROR 7.0"

- 7.0" TFL-LCD screen.
- 2 Ways RCA input(V1/V2)
- Mp5 & BT can be built-in as option.



SW-70M  
Without Mp5 & BT  
SW-70M/PT  
With Mp5 & BT



SW-70MD  
Without Mp5 & BT  
SW-70MD/PT  
With Mp5 & BT

DESK-STYLE 7.0"

- 7.0" TFL-LCD screen.
- 2 Ways RCA input(V1/V2)



SW-70D



SW-4S70D  
With 4 SEG